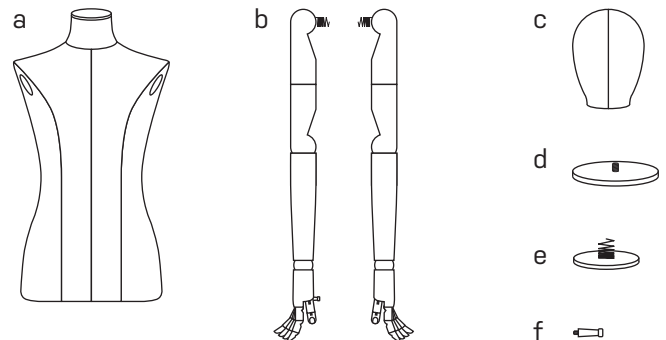


THANK YOU FOR CHOOSING OUR QUALITY PRODUCTS.

In order to enjoy your new product for a long time, please pay attention to our care and handling recommendations.

WHAT'S IN THE BOX:

- a. torso
- b. arms
- c. head
- d. neck cap (already attached)
- e. shoulder caps (already attached)
- f. accessory pin

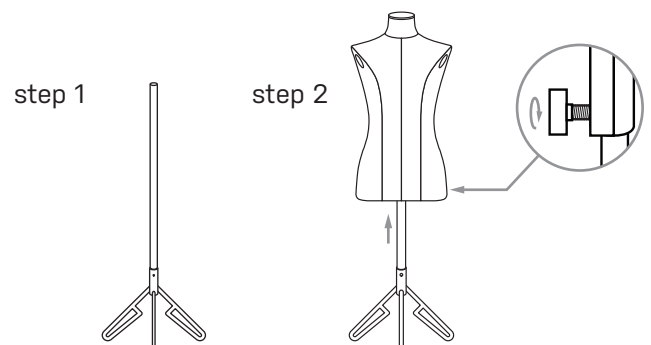


ASSEMBLING INSTRUCTIONS:

To avoid unnecessary scratches and enjoy a great looking product for a long time please consider taking off all jewellery and (dis)assembling this product on a soft surface using gloves.

STEP 1: Assembling the stand

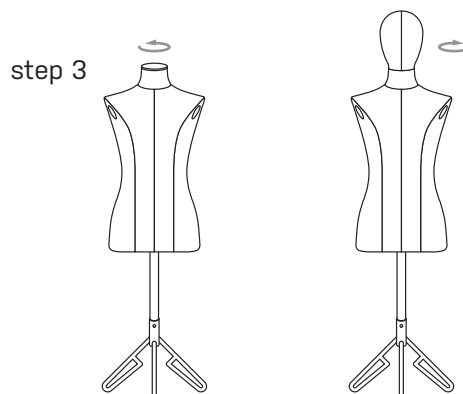
Before assembling the bust, first assemble the stand. (Separate manual enclosed with the base)



STEP 2: Connecting the bust to the stand

Simply locate the fixation mechanism at the bottom of the bust, insert the tube into the desired port (centre or off-centre), adjust height and tighten the butterfly screw.

NOTE! Long torso's only have an off-centre fixation port.



STEP 3: Attaching the head

If desired, the head can be installed by simply unscrewing the neck cap and screwing in the head.

STEP 4: Attaching the arms

If desired, the arms can be installed by simply unscrewing the shoulder caps and screwing in the arms. Should you want to use the accessory pin, it screws into the palm of the right arm.

TIP: Two full rotations should ensure a firm attachment of the arms however, should you wish a more tight fit, you can do an additional full rotation.

HINT: If you hear strange noises when you are performing the 3rd rotation, **do not worry**, that is the coil-screw expanding and it is completely normal.

